



The FrontierUS-Peplink Sales Advantage



At FrontierUS, we've found one thing to be true:

Once our partner resellers add Peplink's SD-WAN products to their connectivity portfolios, they become evangelists, using Peplink in most of their installations.



There are a few key reasons why.

For the customer

Peplink reliably delivers outstanding connectivity while saving costs over alternatives.

For the reseller

Peplink offers such a wide range of devices and capabilities that there's always a solution, no matter the application or project budget.

For the integrator

Peplink is a straightforward install, with easy, fast setup. And, regardless of the unit deployed, **all Peplink devices share the same software ecosystem, installation protocols, and management tools.**

It's never a question of *whether* a Peplink device will meet project requirements, but of *which* one.



A few members of the Peplink Balance family of multi-WAN routers

No-fuss Installation

All Peplink devices share the same management and control console.

Peplink's cloud-based InControl2 device management platform can be used to configure any Peplink device, from a basic single-cellular Pepwave MAX BR1 Mini to an Enterprise-level Balance 2500 for 4,000 VPN peers.

InControl2 configuration protocols can be saved for immediate set-up of future devices. And because InControl2 is web-based, firmware updates, troubleshooting, and management can be executed from anywhere.

Installation is so easy that FrontierUS can pre-configure and blind ship units to end users on behalf of partners.

If the end users can connect power and data cables to the unit, *our partners can set up, test, and monitor the units without ever leaving their offices.*



Reliability

When Peplink ran a contest asking users to report how long their devices had been running, all of the contenders reported **unbroken uptimes in excess of one thousand days**. That echoes feedback we get from our partners.

Peplink hardware is built to last. Their MAX cellular routers are certified for resistance to vibration and electromagnetic interference. They have proven performance in harsh environments, like inside police vehicles and aboard ships at sea.



On the software side, Peplink's proprietary SpeedFusion VPN technology can build connections that stay up even when the main link goes down. Thanks to features like bandwidth bonding and session-persistent hot failover, SpeedFusion can combine low-cost commodity connections, like cable, with cellular and other technologies, providing clients with always-on Internet.

Learn more about unique Peplink SD-WAN features like bandwidth bonding and hot failover.



A selection of Peplink MAX devices

A Solution for Every Customer

The Peplink ecosystem can be tailored to projects of any size, and for every type of client.

The Balance series includes everything from small units ideal for businesses with 10 or fewer users to high-performance routers capable of powering a college campus with 20,000 users.



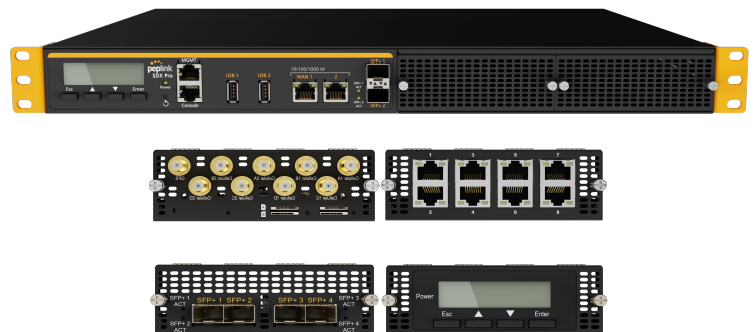
The powerful Balance 580

The MAX line combines all the technology of the Balance series with up to four discrete cellular connections for true unbreakable connectivity.



The popular Pepwave Max BR1

FlexModule units combine the best of all worlds, growing and evolving along with your customers' needs. Compatible routers can be customized and updated with interchangeable modules for cellular, Ethernet, and SFP+ connections. When technology or needs change, the low-cost modules can be swapped out, maintaining the value of the original investment.



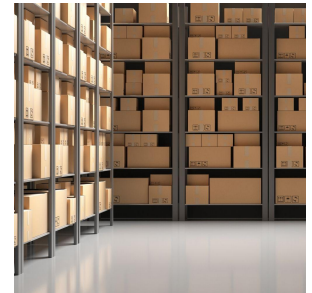
The ultra-flexible SDX Pro and a small selection of FlexModule units

...to name only a few.

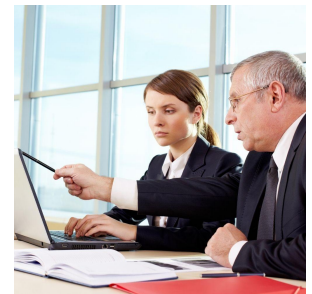
Become a Peplink Reseller

As Peplink's North American distributor, Frontier Computer Corp. is uniquely situated to help you grow your business with the Peplink channel.

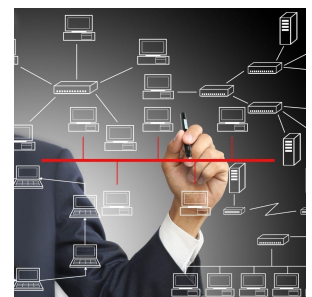
FrontierUS provides our partner resellers with **access to Peplink's full line** of unbreakable connectivity products.



With our **proven Partner Development Plan**, we make sure you're fully trained in Peplink's products and ready to provide outstanding service.



Our **trained and certified team of engineers and Partner Development Managers** provides pre- and post-sales support to help you craft solutions.



Our **shipping expertise**, built over more than 40 years in the networking equipment space, ensures you and your customers have the gear you need, when you need it.



We support PEOPLE who connect PEOPLE and DATA.



Partner with FrontierUS

Our Partner Development Managers are here to answer your questions. Find out how FrontierUS and Peplink can help you grow your business by providing true Unbreakable Connectivity.

[Talk to Us](#)

Ready to start right away? Just fill out our Partner Application, and one of our Partner Development Managers will reach out.

[Apply Now](#)



FrontierComputerCorp.com

Frontier Computer Corp.
1275 Business Park Drive,
Traverse City, MI 49686
866.226.6344 | 231.929.1386
info@frontierus.com